

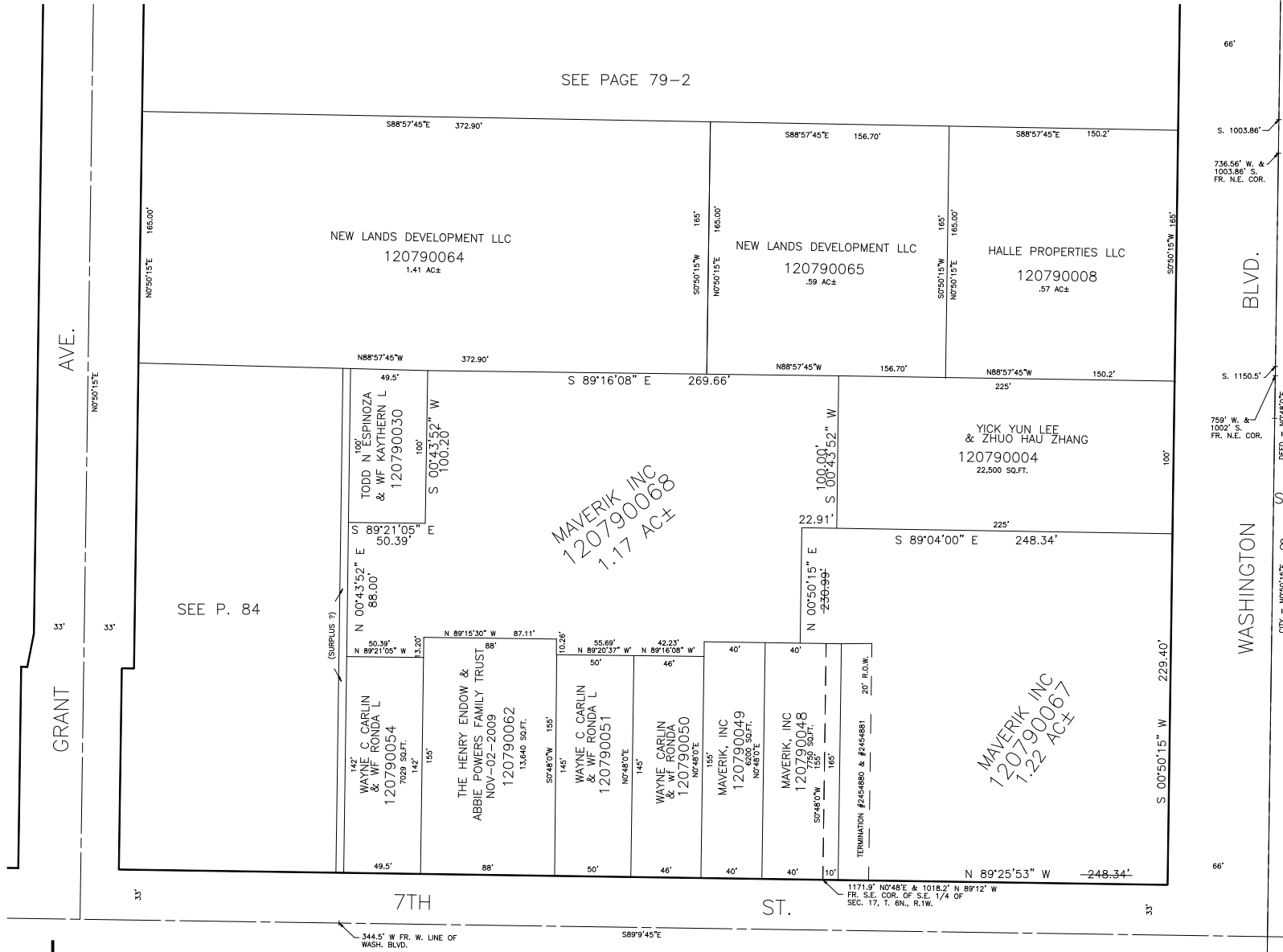
PART OF THE S.E. 1/4 OF
SECTION 17, T.6N., R.1W., S.L.B.&M.

TAXING UNIT: 25

IN OGDEN CITY
SCALE 1" = 50'

ALSO SEE P. 79-2

730.8' N88°57'30"W & 839.30'
50'48" W FR. N.E. COR. OF S.E. 1/4



AVE.

GRANT

7TH

ST.

BLVD.

WASHINGTON

66'

S. 1003.86'
736.56' W. &
1003.86' S.
FR. N.E. COR.

S. 1150.5'
750' W. &
1192' S.
FR. N.E. COR.
DEED = N0748'0"E

SEE
P.
82

CITY = N050'15"E